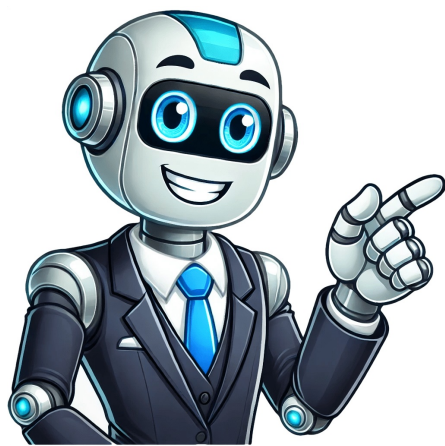


I'm not a bot



Tragic hero examples in movies

Tragic heroes in literature and storytelling have been a cornerstone of human expression for centuries, embodying both admirable virtues and crippling flaws that lead to downfall. ##### The Origins of Tragic Heroes The concept of the tragic hero originated in ancient Greek drama, where characters like Oedipus from Sophocles' "Oedipus Rex" and Achilles from Homer's "Iliad" exemplified this archetype. Typically characterized by noble stature and a fatal flaw, these figures evoke empathy and contemplation from audiences. ##### Common Characteristics of Tragic Heroes Shared traits among tragic heroes include high social status or esteem, a tragic flaw or error in judgment, reversal of fortune, and eventual recognition of their own contribution to their downfall. These elements combine to create powerful narratives that resonate with audiences across cultures. A tragic hero is a powerful archetype that transcends time and culture, as exemplified by characters such as Anakin Skywalker and Oedipus. Despite their differences, both share the classic traits of noble stature, hamartia, and an inevitable downfall that evokes pity and fear. The timeless appeal of tragic heroes lies in their exploration of human flaws and consequences, making them relatable and captivating to audiences. In modern storytelling, including space operas like Star Wars, the concept of a tragic hero is applied to various genres and eras. The character's vulnerability, flaws, and ultimate downfall evoke emotions, allowing viewers to connect with their struggles and aspirations. Tragic heroes offer a cathartic journey through which we can explore deep emotions and moral quandaries. The fantasy genre, known for its epic tales and beautiful landscapes, often features mythological concepts, legends, supernatural elements, or magical components. However, some of the most tragic characters in these films are those who must confront devastating challenges to emerge stronger. The following list showcases 10 such characters from notable fantasy films: 1. Aragorn - The Lord of the Rings: The Return of the King 2. Anakin Skywalker - Star Wars 3. Oedipus - Ancient Tales 4. Willy Loman - A Modern Classic 5. Achilles - Ancient Greek Legends 6. Gollum - The Lord of the Rings 7. Samwise Gamgee - The Lord of the Rings 8. Frodo Baggins - The Lord of the Rings 9. Boromir - The Lord of the Rings 10. Gandalf - The Lord of the Rings Aragorn's tragic past and his relationship with Arwen serves as a poignant reminder of the human struggle. In contrast, characters like Severus Snape and Daenerys Targaryen have endured immense pain, leading to growth and redemption. Severus Snape's backstory reveals a complex web of emotions, driven by love for Lily Potter and her untimely death. Daenerys Targaryen, on the other hand, is forced to confront the harsh realities of ruling Westeros, as well as her own destiny. Willow Ufgood's journey through trials and loss shapes him into a hero, illustrating that true character development often stems from adversity. A tragic yet pivotal moment in Aragorn's life revolves around his claim to the throne of Gondor. Despite this burden, he finds happiness with Arwen, showcasing the enduring power of love against adversity. The downfall of Daenerys Targaryen serves as a poignant reminder that even those with great power can suffer tragic losses when their identity and purpose are stripped away. Meanwhile, other movies like Jekyll, Star Wars: Episode III - Revenge of the Sith, The Lord of the Rings: The Fellowship of the Ring, and The Tragedy of Macbeth have also captured audiences' hearts with their heart-wrenching storylines and tragic characters. These films showcase how even well-intentioned individuals can be led astray by ambition or manipulation, resulting in devastating consequences. In Jekyll, Dr. Henry Jekyll's creation of his alter ego Mr. Hyde ultimately leads to his downfall, serving as a cautionary tale about the dangers of unchecked ambition. Similarly, Anakin Skywalker's fall to darkness in Star Wars: Episode III - Revenge of the Sith serves as a powerful reminder that even those with great potential can be corrupted by the lure of power and control. His transformation into Darth Vader is a tragic moment that resonates deeply with audiences. In The Lord of the Rings: The Fellowship of the Ring, Boromir's struggle with the corrupting influence of the One Ring serves as a poignant reminder of the dangers of desire and ambition. His ultimate sacrifice to protect his friends and the quest is a heart-wrenching moment that has become an iconic part of the series. The Tragedy of Macbeth also explores themes of tragedy, power, and corruption, with its adaptation of Shakespeare's classic play offering a haunting and visually stunning portrayal of the consequences of unchecked ambition. These films serve as powerful reminders of the importance of balance and humility in achieving one's goals, and the devastating consequences that can result from succumbing to darkness and corruption. The Tragedy of Macbeth, directed by Joel Coen, is a gripping adaptation of Shakespeare's classic tale, starring Denzel Washington as the titular character. The film explores Macbeth's descent into madness and tyranny, highlighting the destructive nature of his own ambition. In contrast to other fantasy films, such as Excalibur and Clash of the Titans, which also feature strong female characters, The Tragedy of Macbeth delves deeper into the complexities of human nature. The 1981 film Excalibur, directed by John Boorman, retells the story of King Arthur and the Knights of the Round Table, featuring Helen Mirren as the powerful sorceress Morgana. Despite being ostracized in many versions of the tale, Morgana emerges as a strong and independent woman who lives her own life. On the other hand, Clash of the Titans, directed by Louis Leterrier, is a more action-oriented film that follows Perseus, played by Sam Worthington, on his quest to become a god. The film features many demons and creatures, but also explores the tragic story of Perseus' journey. Overall, fantasy films often explore complex themes such as loss, resilience, and fate, leaving a lasting impression on audiences. The world of cinema is replete with heartbreaking stories that have captured audiences' hearts and minds. From iconic characters like Frankenstein's monster to fan-favorite franchises such as The Lord of the Rings, these tragic characters leave an indelible mark on viewers. Gollum from The Lord of the Rings series is a poignant example of a life consumed by obsession, his downfall stemming from layers of complexity. His character arc is a powerful symbol of the destructive power of obsession and moral corruption. Baz Luhrmann's adaptation of Romeo & Juliet provides a fresh take on the classic tale, immersing audiences in its narrative through beautiful visuals. The tragic love story of the two feuding families serves as a reminder that sometimes fate can be cruel. The Harry Potter saga has also offered iconic characters to connect with, such as Alan Rickman's Snape, who embodies complexity and heroism despite his harsh treatment of pupils. His troubled past, including his relationship with Lily and upbringing in an abusive household, makes him a tragic figure. Frankenstein, a 93-year-old horror masterpiece, remains an iconic entry in the genre, its enduring influence a testament to its timeless story. In the realm of cinematic tragedy, three iconic characters stand out: Frankenstein's monster, King Kong, and Anakin Skywalker (Darth Vader). Frankenstein's creation is a poignant tale of alienation, loneliness, and the consequences of playing God. The monster's child-like innocence and vulnerability lead to tragic outcomes as others fear, reject, and hate him. Similarly, King Kong is a victim of human exploitation, misunderstood as aggressive when he's merely trying to protect himself. His story serves as a commentary on humanity's struggle with nature. Anakin Skywalker's downfall is one of the most heart-wrenching in the Star Wars universe. Manipulated by Palpatine and driven by fear, Anakin's tragic journey from hero to villain has captivated fans worldwide. In contrast, Maggie Fitzgerald from Million Dollar Baby is a deeply tragic character due to her background of hardship and poverty. Her perseverance and determination ultimately lead to a heartbreaking fate. Oh Dae-su's twisted story in Park Chan-wook's film is another example of cinematic tragedy. The protagonist's imprisonment for fifteen years sets the stage for a revenge tale that explores themes of trauma, violence, and redemption. The movie Oldboy follows Oh Dae-su, who after being imprisoned for three years learns that he must find his captor within five days. This journey is filled with shocking truths about the justice system and severe psychological manipulation that leave the character shattered. Similarly, Schindler's List is a harrowing WWII film that explores the horrors of the Holocaust through the story of Oskar Schindler, who helps his Jewish workforce despite witnessing their prosecution by the Nazis. The Elephant Man, based on a true story, delves into the life of Joseph Merrick, a person with physical disfigurement who faces exploitation and abuse, highlighting the cruelty inflicted on those who are different. The text is about various events, news, and anniversaries that took place on different dates, including May 15th. It mentions items owned by the Tredwell family in a historic building, fighter pilot I.B. Donalson's achievements, and notable events such as the 2024 European Athletics Championships and the World Snooker Championship. The text also includes information about deaths of notable individuals like José Mujica, Koyo Kouoh, and Vakhtang Machavariani. Additionally, it highlights Roman emperor Valentinian II's mysterious death in 392 AD, historical events like the American Civil War, and anniversaries such as Emily Dickinson's passing. The text concludes with a brief description of kiwifruit, which is not directly related to the other content but seems to be an unrelated article snippet. The 'Hayward' kiwifruit variety has an oval shape, measuring 5-8 centimetres in length and 4.5-5.5 cm in diameter. The fruit boasts a thin, fuzzy skin with a light brown hue, while its interior features a pale green or golden flesh containing tiny, edible seeds. Native to central and eastern China, kiwifruit has been documented as early as the 12th century during the Song dynasty. In recent times, global production has risen significantly, with China accounting for over half of the 4.4 million tonnes produced in 2023. A photograph showcasing a cross-section of a Portuguese-grown kiwifruit is displayed. West Fourth Street is a major thoroughfare that begins on Avenue D where it intersects with East 4th Street, then continues onto Broadway and becomes West 4th Street, running west until it hits the Avenue of the Americas (Sixth Avenue). Here, the street confusingly intersects with several other streets in Greenwich Village, including West 10th, 11th, 12th, and 13th Streets. The street's width is typically around 40 feet between curbsides, but narrows to 35 feet from Seventh to Eighth Avenues due to the original Greenwich Village grid layout. The southern part of the street, which forms the border of Washington Square Park, is known as Washington Square South. Historically, this section was once called Asylum Street, named after the Orphan Asylum Society, but was later renamed West 4th Street in 1833. Several nearby streets were also renumbered, contributing to the current street numbering confusion. West Fourth Street has been home to several notable landmarks and institutions. The Washington Square Methodist Church, a Romanesque Revival marble edifice designed by Gamaliel King in 1859-60, was sold in 2005 for conversion into residential units. During construction, parts of the church were salvaged for use in Urban Spring, a cafe in Brooklyn. Judson Memorial Church, located at the corner of Thompson Street and Washington Square South, features stunning stained glass work by John La Farge. The West Fourth Street subway station is one of the major transfer points in the New York City Subway system. The street is also home to the famous "Cage" basketball courts, a hangout for some of New York's best ballplayers. Throughout its history, West 4th Street has been a hub for bohemian culture and intellectual gatherings. The Mad Hatter tea room, located at 150 West 4th Street, was a popular spot for artists and intellectuals to meet and discuss ideas. The Golden Swan bar, known as the "Hell Hole," was a famous haunt of Eugene O'Neill and the inspiration for his play The Iceman Cometh. Several notable writers, including Willa Cather and John Reed, lived on or near West 4th Street in the early 20th century. The street's rich history and cultural significance continue to make it an iconic part of New York City's landscape. In the heart of Manhattan, a vibrant stretch of real estate played host to a plethora of creative minds. Gertrude Vanderbilt Whitney's 1918-founded Whitney Studio Club at 147 West 4th Street was a hub for up-and-coming artists like Ashcan School painter John Sloan and social realists Reginald Marsh and Isabel Bishop. The facility, which operated for ten years, paved the way for the establishment of the Whitney Museum of American Art. Nearby, sculptor Edward Hopper showcased his work in 1920, cementing his place among the likes of Sloan and Marsh. Bob Dylan made history on this very street, with his 1961 performance at Gerde's Folk City (11 West 4th Street) marking his New York debut. The legendary folk club hosted Simon & Garfunkel as well, while Dylan himself lived in a \$60-per-month studio apartment at 161 West 4th Street from early-1962 to late-1964. The street may have even inspired his iconic song "Positively 4th Street." In the years that followed, music venue The Bottom Line (15th West 4th Street) became a staple of the area, hosting countless performances from 1974 to 2004. Despite the passage of time, West 4th Street remains an integral part of Manhattan's artistic heritage, its legacy continuing to influence generations of creatives. Madison Avenue, Fifth Avenue, Park Avenue, and Sixth Avenue are all part of a larger section called Avenue A.