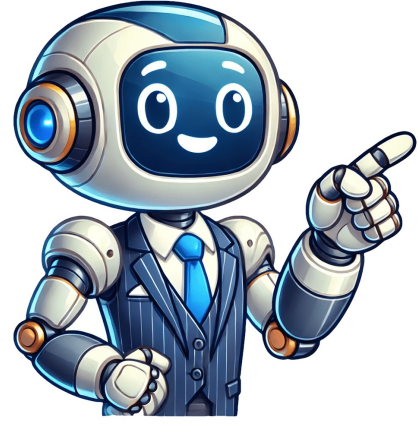


Click to verify



anime and Manga can be overwhelming to new fans, especially with all the different Japan Terms being thrown around. Long time anime fans know the difference between Shonen and Shounjo off the top of their head, but it can be hard to keep up with it for all new fans. Some think that anime itself is a genre, however anime is a medium and is just a subcategory of animation with many genres. Anime shares genres with manga, because about 40 percent of anime is adapted from an original manga series. With all of the classifications and names of the different types of anime and manga worldwide, we here at Comibook want to help you make sense of it all. So here are the five basic types of anime and how to identify them: Shonen can be translated to mean few years in English, and refers to a younger male audience. Shonen anime usually look to meet all the interests of younger males. Most of the series feature a young male protagonist. Shonen anime have some of the most popular and well known franchises as they contain a little bit of everything. There's elements of action, adventure, fighting, drama, comedy, and coming of age. Some of the most popular/well known Shonen anime include: NarutoOne PieceAttack on TitanBleachFull Metal AlchemistFairy TailHunter x Hunter Seinen can be translated as young man in English, and targets the young adult or adult male viewers. Seinen anime usually have the same stories and themes as shonen, however are more sophisticated than shonen. They are more violent, sexual, satirical, or psychologically intense and therefore cater to a more mature audience. It is popular with high school teens all the way up to businessmen. Some of the most popular/well known Seinen anime include: Usagi DropNodame CantabileChihayafuruParadise Kiss Last but not least we have another genre that most have at least seen one show from kodomomuke. Kodomomuke means directed at children in English, and is the only genre suitable for young viewers. They usually are super cute, imaginative, and creative, as well as has a moral message. The shows usually teach children how to be considerate, behave, and follow the right path to life, while still being fun and exciting. Some of the most popular kodomomuke anime include: PokemonDoraemonDigimon AdventureYokai WatchHamtaro What is Shounjo Anime? Shounjo anime is an anime that targets a mostly female audience. The term shounjo (少女) means "young girl" in Japanese. These anime make their movies interconnected with emotions and romance and are more appealing to teenage girls and young women. Examples include Fruits Basket, Ouran High School Host Club, Sailor Moon, and My Little Monster. anime basically targets a young female audience, and Shonen anime mostly targets a young male audience. However, both can be enjoyed by viewers of any gender. Let's understand with this table.

Genre	Target Audience	Themes	Examples
Shonen	Younger males (approx. 10-15 years)	Action, adventure, fighting, drama, comedy, coming of age	Naruto, One Piece, Attack on Titan, Bleach, Full Metal Alchemist, Fairy Tail, Hunter x Hunter
Seinen	Young men (approx. 16-20 years)	Action, adventure, fighting, drama, comedy, coming of age	Usagi Drop, Nodame Cantabile, Chihayafuru, Paradise Kiss, Last but not least
Shounjo	Young women (approx. 10-15 years)	Love, romance, friendship, coming of age	Fruits Basket, Ouran High School Host Club, Sailor Moon, My Little Monster
Kodomomuke	Children (approx. 3-10 years)	Adventure, fantasy, comedy, coming of age	Pokemon, Doraemon, Digimon Adventure, Yokai Watch, Hamtaro

Seinen anime usually have the same stories and themes as shonen, however are more sophisticated than shonen. They are more violent, sexual, satirical, or psychologically intense and therefore cater to a more mature audience. It is popular with high school teens all the way up to businessmen. Some of the most popular/well known Seinen anime include: Usagi DropNodame CantabileChihayafuruParadise Kiss Last but not least we have another genre that most have at least seen one show from kodomomuke. Kodomomuke means directed at children in English, and is the only genre suitable for young viewers. They usually are super cute, imaginative, and creative, as well as has a moral message. The shows usually teach children how to be considerate, behave, and follow the right path to life, while still being fun and exciting. Some of the most popular kodomomuke anime include: PokemonDoraemonDigimon AdventureYokai WatchHamtaro What is Shounjo Anime? Shounjo anime is an anime that targets a mostly female audience. The term shounjo (少女) means "young girl" in Japanese. These anime make their movies interconnected with emotions and romance and are more appealing to teenage girls and young women. Examples include Fruits Basket, Ouran High School Host Club, Sailor Moon, and My Little Monster. anime basically targets a young female audience, and Shonen anime mostly targets a young male audience. However, both can be enjoyed by viewers of any gender. Let's understand with this table.

Genre	Target Audience	Themes	Examples
Shonen	Younger males (approx. 10-15 years)	Action, adventure, fighting, drama, comedy, coming of age	Naruto, One Piece, Attack on Titan, Bleach, Full Metal Alchemist, Fairy Tail, Hunter x Hunter
Seinen	Young men (approx. 16-20 years)	Action, adventure, fighting, drama, comedy, coming of age	Usagi Drop, Nodame Cantabile, Chihayafuru, Paradise Kiss, Last but not least
Shounjo	Young women (approx. 10-15 years)	Love, romance, friendship, coming of age	Fruits Basket, Ouran High School Host Club, Sailor Moon, My Little Monster
Kodomomuke	Children (approx. 3-10 years)	Adventure, fantasy, comedy, coming of age	Pokemon, Doraemon, Digimon Adventure, Yokai Watch, Hamtaro

Seinen anime usually have the same stories and themes as shonen, however are more sophisticated than shonen. They are more violent, sexual, satirical, or psychologically intense and therefore cater to a more mature audience. It is popular with high school teens all the way up to businessmen. Some of the most popular/well known Seinen anime include: Usagi DropNodame CantabileChihayafuruParadise Kiss Last but not least we have another genre that most have at least seen one show from kodomomuke. Kodomomuke means directed at children in English, and is the only genre suitable for young viewers. They usually are super cute, imaginative, and creative, as well as has a moral message. The shows usually teach children how to be considerate, behave, and follow the right path to life, while still being fun and exciting. Some of the most popular kodomomuke anime include: PokemonDoraemonDigimon AdventureYokai WatchHamtaro What is Shounjo Anime? Shounjo anime is an anime that targets a mostly female audience. The term shounjo (少女) means "young girl" in Japanese. These anime make their movies interconnected with emotions and romance and are more appealing to teenage girls and young women. Examples include Fruits Basket, Ouran High School Host Club, Sailor Moon, and My Little Monster. anime basically targets a young female audience, and Shonen anime mostly targets a young male audience. However, both can be enjoyed by viewers of any gender. Let's understand with this table.

Genre	Target Audience	Themes	Examples
Shonen	Younger males (approx. 10-15 years)	Action, adventure, fighting, drama, comedy, coming of age	Naruto, One Piece, Attack on Titan, Bleach, Full Metal Alchemist, Fairy Tail, Hunter x Hunter
Seinen	Young men (approx. 16-20 years)	Action, adventure, fighting, drama, comedy, coming of age	Usagi Drop, Nodame Cantabile, Chihayafuru, Paradise Kiss, Last but not least
Shounjo	Young women (approx. 10-15 years)	Love, romance, friendship, coming of age	Fruits Basket, Ouran High School Host Club, Sailor Moon, My Little Monster
Kodomomuke	Children (approx. 3-10 years)	Adventure, fantasy, comedy, coming of age	Pokemon, Doraemon, Digimon Adventure, Yokai Watch, Hamtaro

Seinen anime usually have the same stories and themes as shonen, however are more sophisticated than shonen. They are more violent, sexual, satirical, or psychologically intense and therefore cater to a more mature audience. It is popular with high school teens all the way up to businessmen. Some of the most popular/well known Seinen anime include: Usagi DropNodame CantabileChihayafuruParadise Kiss Last but not least we have another genre that most have at least seen one show from kodomomuke. Kodomomuke means directed at children in English, and is the only genre suitable for young viewers. They usually are super cute, imaginative, and creative, as well as has a moral message. The shows usually teach children how to be considerate, behave, and follow the right path to life, while still being fun and exciting. Some of the most popular kodomomuke anime include: PokemonDoraemonDigimon AdventureYokai WatchHamtaro What is Shounjo Anime? Shounjo anime is an anime that targets a mostly female audience. The term shounjo (少女) means "young girl" in Japanese. These anime make their movies interconnected with emotions and romance and are more appealing to teenage girls and young women. Examples include Fruits Basket, Ouran High School Host Club, Sailor Moon, and My Little Monster. anime basically targets a young female audience, and Shonen anime mostly targets a young male audience. However, both can be enjoyed by viewers of any gender. Let's understand with this table.

Genre	Target Audience	Themes	Examples
Shonen	Younger males (approx. 10-15 years)	Action, adventure, fighting, drama, comedy, coming of age	Naruto, One Piece, Attack on Titan, Bleach, Full Metal Alchemist, Fairy Tail, Hunter x Hunter
Seinen	Young men (approx. 16-20 years)	Action, adventure, fighting, drama, comedy, coming of age	Usagi Drop, Nodame Cantabile, Chihayafuru, Paradise Kiss, Last but not least
Shounjo	Young women (approx. 10-15 years)	Love, romance, friendship, coming of age	Fruits Basket, Ouran High School Host Club, Sailor Moon, My Little Monster
Kodomomuke	Children (approx. 3-10 years)	Adventure, fantasy, comedy, coming of age	Pokemon, Doraemon, Digimon Adventure, Yokai Watch, Hamtaro

Seinen anime usually have the same stories and themes as shonen, however are more sophisticated than shonen. They are more violent, sexual, satirical, or psychologically intense and therefore cater to a more mature audience. It is popular with high school teens all the way up to businessmen. Some of the most popular/well known Seinen anime include: Usagi DropNodame CantabileChihayafuruParadise Kiss Last but not least we have another genre that most have at least seen one show from kodomomuke. Kodomomuke means directed at children in English, and is the only genre suitable for young viewers. They usually are super cute, imaginative, and creative, as well as has a moral message. The shows usually teach children how to be considerate, behave, and follow the right path to life, while still being fun and exciting. Some of the most popular kodomomuke anime include: PokemonDoraemonDigimon AdventureYokai WatchHamtaro What is Shounjo Anime? Shounjo anime is an anime that targets a mostly female audience. The term shounjo (少女) means "young girl" in Japanese. These anime make their movies interconnected with emotions and romance and are more appealing to teenage girls and young women. Examples include Fruits Basket, Ouran High School Host Club, Sailor Moon, and My Little Monster. anime basically targets a young female audience, and Shonen anime mostly targets a young male audience. However, both can be enjoyed by viewers of any gender. Let's understand with this table.

Genre	Target Audience	Themes	Examples
Shonen	Younger males (approx. 10-15 years)	Action, adventure, fighting, drama, comedy, coming of age	Naruto, One Piece, Attack on Titan, Bleach, Full Metal Alchemist, Fairy Tail, Hunter x Hunter
Seinen	Young men (approx. 16-20 years)	Action, adventure, fighting, drama, comedy, coming of age	Usagi Drop, Nodame Cantabile, Chihayafuru, Paradise Kiss, Last but not least
Shounjo	Young women (approx. 10-15 years)	Love, romance, friendship, coming of age	Fruits Basket, Ouran High School Host Club, Sailor Moon, My Little Monster
Kodomomuke	Children (approx. 3-10 years)	Adventure, fantasy, comedy, coming of age	Pokemon, Doraemon, Digimon Adventure, Yokai Watch, Hamtaro

Seinen anime usually have the same stories and themes as shonen, however are more sophisticated than shonen. They are more violent, sexual, satirical, or psychologically intense and therefore cater to a more mature audience. It is popular with high school teens all the way up to businessmen. Some of the most popular/well known Seinen anime include: Usagi DropNodame CantabileChihayafuruParadise Kiss Last but not least we have another genre that most have at least seen one show from kodomomuke. Kodomomuke means directed at children in English, and is the only genre suitable for young viewers. They usually are super cute, imaginative, and creative, as well as has a moral message. The shows usually teach children how to be considerate, behave, and follow the right path to life, while still being fun and exciting. Some of the most popular kodomomuke anime include: PokemonDoraemonDigimon AdventureYokai WatchHamtaro What is Shounjo Anime? Shounjo anime is an anime that targets a mostly female audience. The term shounjo (少女) means "young girl" in Japanese. These anime make their movies interconnected with emotions and romance and are more appealing to teenage girls and young women. Examples include Fruits Basket, Ouran High School Host Club, Sailor Moon, and My Little Monster. anime basically targets a young female audience, and Shonen anime mostly targets a young male audience. However, both can be enjoyed by viewers of any gender. Let's understand with this table.

Genre	Target Audience	Themes	Examples
Shonen	Younger males (approx. 10-15 years)	Action, adventure, fighting, drama, comedy, coming of age	Naruto, One Piece, Attack on Titan, Bleach, Full Metal Alchemist, Fairy Tail, Hunter x Hunter
Seinen	Young men (approx. 16-20 years)	Action, adventure, fighting, drama, comedy, coming of age	Usagi Drop, Nodame Cantabile, Chihayafuru, Paradise Kiss, Last but not least
Shounjo	Young women (approx. 10-15 years)	Love, romance, friendship, coming of age	Fruits Basket, Ouran High School Host Club, Sailor Moon, My Little Monster
Kodomomuke</			